



President's Corner

By Al Gubiotti

On behalf of PMI Rochester I want to wish you and your family a Happy Holiday Season. We've had a busy year of events that have contributed to the education and advancement of the members of this chapter. Each chapter meeting, seminar, workshop and PDD contributed needed PDU's in order for our PMPs to meet their PDU goals.

Chapter operations exceeded all the requirements of the PMI GOC (Global Operations Center). We completed our business plan that had the input of the board members as well as members of the chapter community. Thanks to Wayne Delperdange, Barry Thornton and Dave McDowell for your input on this document. Special thanks to Andrew Battisti for leading this project to on-time completion. We also were one of the first to complete our SAS chapter assessment. I also had the chance to attend the International Leadership Conference in October as well as the Region 4 conference in May. It was at the Region 4 Conference where our chapter was awarded the honor to host the region 4 2010 conference. I also gave a presentation at the International Leadership Conference on the plans for the Region 4 conference

Working in partnership with our partners, we have instituted workshops on PMP certification (day, night and weekend classes) as well as ongoing education seminars.

2010 brings to us new challenges, providing the same level of service in an ever changing business climate. We believe in our profession, but it is a practice that needs constant attention and services. We will continue to deliver these services to our chapter members.

I want to end thanking all of the volunteers, directors and VPs for your hard work so far this year. Without your help we could not get the job done! I look forward to 2010 knowing full well your dedication to our chapter and profession.

In This Issue

New Branch	2
Events	2
Region 4 Conference	2
PDD 2010	2
Volunteer Connection	3
New Chapter Members	4
PMP Re-Certification	4
Get Certified	4
Board Members	5



25th Anniversary

2010 marks the 25th anniversary of PMIRochester!! Look for announcements concerning how we will celebrate this important milestone. If you are a past officer of the chapter, please send us a note to provide your current contact information (president@pmirochester.org).

Cornell/Ithaca Branch

PMIRochester is working with a group of unaffiliated PMI members in Ithaca, who are located at Cornell, to form a branch of PMIRochester at their location.

The members in Ithaca are currently meeting regularly and beginning to share speakers from Rochester meetings. We have had several organizational discussions and are moving forward to formally establish this relationship. We are very pleased that the Cornell branch has chosen to associate With us, and we look forward to their members joining us. Welcome Cornell/Ithaca!!!

Holiday Dinner Party

The Chapter Holiday Dinner Party was held on Thursday, December 10th at the Woodcliff Hotel & Spa, from 5:30pm – 9:00 pm. This was a great networking evening, with first class entertainment and dining. More great networking coming up at the January Chapter meeting. Sign up for meetings at www.pmirochester.org.

Region 4 Conference

You may not know that PMI Rochester has been selected to host the annual Region 4 Conference. Hosting this event is an honor, as well as an opportunity to showcase the great chapter we have! The conference runs from June 10th – 13th and will be held at the Woodcliff Hotel & Spa.

The keynote speaker will be the President of PMI Greg Balestrero! Planning is in process and we will keep you informed of progress in the coming weeks.

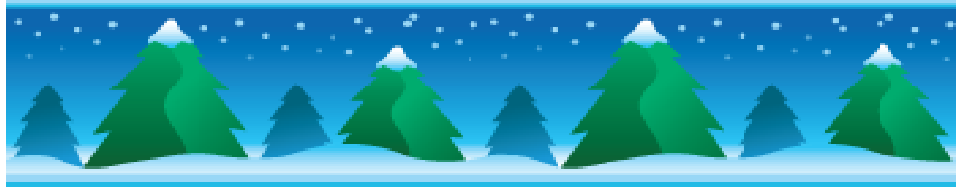
We need volunteers to help us with this event!! If you would like to help, please go the “Volunteer” page at www.pmirochester.org to sign up.

Did you know?

Region 4 represents 24 chapters covering 23,000 members. It is the largest region in all of PMI.

Region 4 web site: <http://www.pmir4.com/>





Events

December 10:	Holiday Dinner Party
January 19 th	Monthly chapter meeting
February 11 th	Monthly chapter meeting
March 18 th	Monthly chapter meeting
April 13 th	Monthly chapter meeting
May 4 th	Annual PDD
June 17 th	End of Year Picnic
June 10-13	Region 4 Conference hosted by PMI Rochester.

Sign Up/Info here: www.pmirochester.org

PDD 2010

This year's PDD, to be held on May 4th, is still in the planning process, but is well underway. PDD is traditionally a day that's jam-packed with great information, vendors, networking and PDU-earning opportunities. Registration available soon.

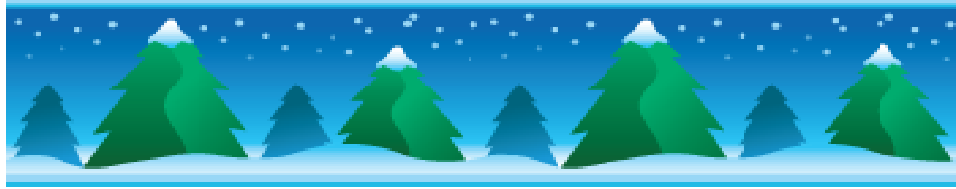
Volunteer Connection

Why volunteer? Simple: First, *you earn PDUs* for volunteer activities within your local chapter. Second, you make a difference in our chapter by helping the membership. Third, you learn new things about project management in the process. And, don't forget those PDUs!! You can earn up to 5 PDUs just by volunteering!!

- Registration for events – 5 hrs /month
- Vendor management – 10 hrs/month
- Job posting's – 5 hrs/month
- Medical Insurance management – 2 hrs/month
- Facilities manager – 5-6 hrs/month
- Grant manager – 10 hrs/month
- Scholarships – 10 hrs/month
- Assistance with PDD – 10 hrs/month (more as PDD draws near)
- Event photographer – 2 hrs/month

If interested please email Marilyn Bohrer at Volunteers@PMIRochester.org. Subject should be "PMI Volunteer". Indicate what opportunity you want to learn more about! We will send details out to those interested. This is a great way to meet new people and to network!





New Chapter Members

We'd like to extend a very warm welcome to PMI Rochester's new members who joined from June–October 2009:

Richard Bauer, Jr.

Carol Larsen

David S. Browne, PMP

Stephanie Welk

Bess J. McDonald

David J. Hahn

Zen Chiu, P.E., PMP

Nancy Eileen Wilfeard

Annie K. Geraci, CAPM

Madhav Bapurao Junghare, PI

Mei Fun Kitty Lok

Jay Robert Miller, PMP

Yvonne Selbig Hylton

Richard Rock

Kevin Howard

Marietta Bastable, PMP

Joseph Dwayne Pollheim, Sr.

Thomas J. Kastner

Jennifer Lynn Case

Rick P. Villa

Nicole Tascione

Diane M. Burden

Rhonda L. Warnick

Barbara Anne Wheeler, PMP

Herman Joseph Klingenberg

Miguel Velazquez

Michele M. Heine

Gary D. Werth

Nancy Muir–Gaire

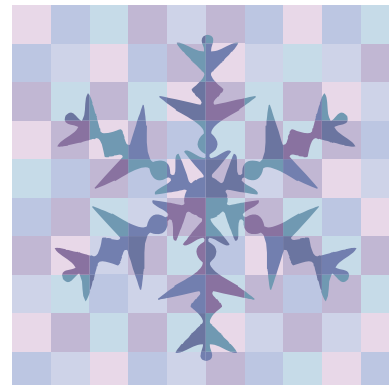
Mitchell S. Steffen

Elizabeth A Banas

WELCOME ABOARD! !!

PMI HQ News

- PMI Global conference 2010
22–24 February
Melbourne, Australia
- PMI Launches Communities of Practice in the following areas:
 - › [Agile](#)
 - › [Consulting](#)
 - › [International Development](#)
 - › [Organizational Project Management](#)
 - › [Project Human Resource Management](#)
 - › [Project Management Global Sustainability](#)
 - › [Retail](#)
 - › [Utility](#)
- New Tool for Reporting PDU's
The new tool is called the “[Continuing Certification Requirements System](#)” (CCRS).
- [Access PMBOK – All Editions](#)
As a PMI member, you have complimentary access to PMI's published standards.





PMP Re-Certification

PDU Reporting:

The Chapter no longer submits PDU's for PMPs who attend the monthly chapter meetings. For all events, PMPs must submit their own PDU's. PMPs should periodically check their transcripts to be sure they are being credited appropriately. To check your PDU's, logon to www.pmi.org and click the link to "View PDU's". Note that PMI has implemented a new tool for recording your PDU's this year.

Get Certified!

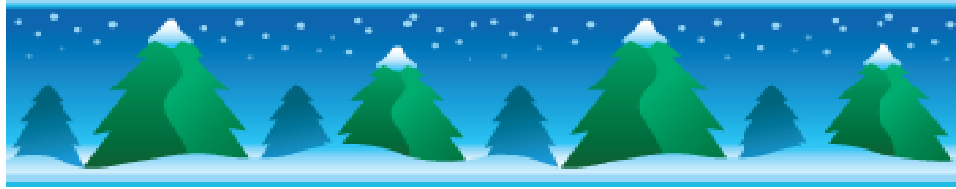
If you are seeking certification, we want to help you! SIGN UP for the PMP or CAPM Certification Exam Prep course. This is a serious preparation course for those who are serious about obtaining their PMP or CAPM credential. And, it's offered right here in Rochester - no long trip required! To find classes and sign up, visit www.pmirochester.org

Monthly Meetings

We've changed the venue for chapter meetings, and have moved to The Woodcliff Hotel and Spa. **The food is fantastic!** You have got to come and sample the sumptuous meals being served up at our meetings this year!! Please invite your co-workers who are interested in Project Management! Our chapter meetings provide a great local resource that's affordable, effective and open to all.

Happy Holidays!





PMIRochester Board

OFFICERS:

President:

Albert Gubiotti, PMP

PMI Education Foundation Liaison

PMI Region 4 Website Director

President@pmirochester.org

Executive VP

Andrew Battisti, PMP

execvp@pmirochester.org

VP & Treasurer:

Joanne Greene-Blose, PMP

treasurer@pmirochester.org

VP & Secretary:

Maria Washington, PMP

secretary@pmirochester.org

VP of Governance:

Open

governance@pmirochester.org

VP of Marketing and Communications:

Roger Van Houten, PMP

publicity@pmirochester.org

VP of Membership:

Ray Anselmi, PMP

membership@pmirochester.org

DIRECTORS:

Director of Certification & Re-Certification

William Leach, PMP

certifications@pmirochester.org

Director of Communications and Social Networking:

Suzy Ahrens, PMP

communications@pmirochester.org

Director of Corporate Relations:

Open

corprelations@pmirochester.org

Director of Education and Government Relations

Open

education-govrelations@pmirochester.org

Director of Information Technology

Open

Director of PDD Conference:

Cindy Graney, PMP

PDDconference@pmirochester.org

Director Programs and Seminars

Open

Director of Publicity and Newsletter

Roger Van Houten, PMP (Acting)

publicity@pmirochester.org

Director of Volunteers & Special projects:

Marilyn Bohrer

PMPvolunteers@pmirochester.org
